

NO. SCZ-0077 R-1 to D

Desc N side of Harry bet. Woodlawn & Rock Road

BY Kenneth Childs

DOA BODY ACTION NOTICES

1-21-60 MAPC Approve

2-3-60 BCoC "

CLOSED

file discarded 2-19-82

RESOLUTION NO. _____ PUBLISHED 7-14-60

T21-202

PICTURES SCZ-0077

131
132

562-0077

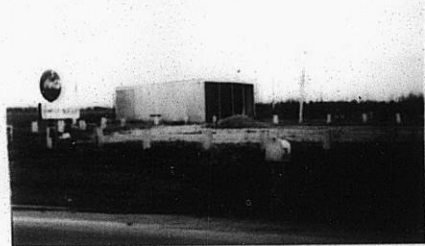
THE SHEAR MFG. CO. HASTINGS, MINN., U.S.A.
MANTA FIBRE



1



2



3

300

347

PICTURES SCZ-0078

NO SCZ-0078 R-1 & IC TO E
Desc BETWEEN HILLSIDE & A PT 1320' E OF HILLSIDE
FROM 3/4 MI N OF 37TH ST NO TO 3/4 MI S OF 37TH ST NO.
BY WAYNE TJADEN ET AL
DOA BODY ACTION NOTICES
2-4-60 MAPC DEFER TO 3-3-60
3-3-60 MAPC Approve S2 + Deny U1
3-10-60 Bd Co C Defer 1 wh.
9-17-60 Bd Co Com Approve all use S of RR n-o-w.
file discarded 2-19-82
RESOLUTION NO. _____ PUBLISHED May 20, 1960
July 14, 1960

321

321

S02-0078

PICTURES TAKEN JAN 15, 1960



1.



2.



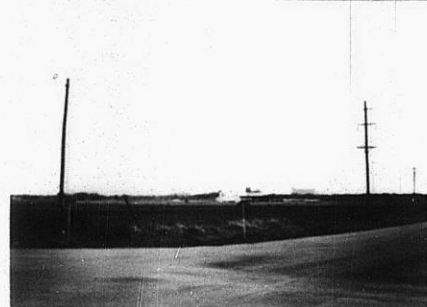
3.



4.



5.



6.



7.



8.

57

121



4



5



6



7



8

SC2-0078

STE

XBE

SCZ0079

NO. SCZ-0079 R-1 to C

Desc ES Seneca between 58th St So & 59th St So

BY Russell Pearson + Norma J. Peart

DOA	BODY	ACTION	NOTICES
2-18-60	MAPC	Deny	yes
2-27-60	B/C/C	Deny	

file discarded 2-19-81

RESOLUTION NO. _____ PUBLISHED _____

4
20

311

XBE



7.



8.



9.

WARD MAP CO. HASTINGS, MINN.
MANILA FIBRE

5200-275

5200-275

5200-275

5200-275