

SCZ-0110

NO. SCZ-0110 LC & R-1 TO E

DESC NORTHEAST CORNER OF 21ST STREET AND RIDGE ROAD.

BY KESSLER BROS., INC.  
DOA BODY ACTION NOTICES

11-17-60 MAPC off home

12-1-60 Bd Co Com off home.

file discarded 2-19-82

RESOLUTION NO. 12-1-60 PUBLISHED 12-7-60  
adopted

30

31

SC2-0110



1



2



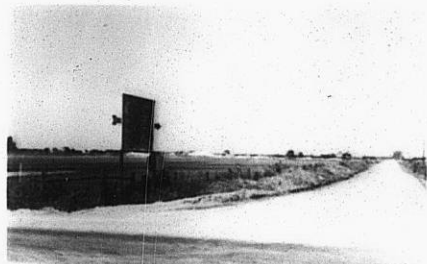
3



4



5



6

3E

3E