

SCZ-0115

NO. SCZ-0115 R-1 TO LC

Desc NE CORNER OF ESPERENCE AND KELLOGG.

BY ETHEL B. DAWSON  
DOA BODY ACTION NOTICES

3-2-61 MAPC Refer 30 days for possible hearing

~~3-4-61~~ MAPC Deny

4-13-61 Bald Camp ~~Refer 30 days~~ Deny

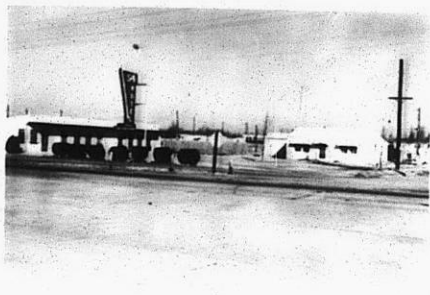
file discarded 2-19-82

RESOLUTION NO. \_\_\_\_\_ PUBLISHED \_\_\_\_\_

310

34x

SC2-0118



1



2



3



4



5



6

319

34x