

SCZ-0118

NO. SCZ-0118 R-1 to LC

DESC. ON N SIDE OF 45TH ST. SOUTH AND BETWEEN LULU AND  
HYDRAULIC.

BY ELIZABETH WYATT  
DOA BODY ACTION NOTICES

4-6-61 MAPC Deny  
4-13-61 Bd Co Com App for use LC 300X300 ft  
in SE cor of application  
area

file discarded 2-19-82  
RESOLUTION NO. \_\_\_\_\_ PUBLISHED 4-22-61

310

X5E



2



3

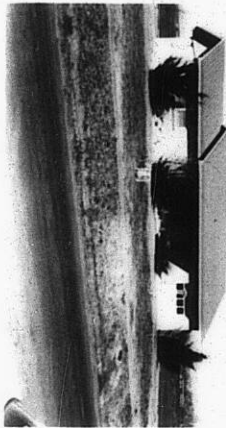


4

8110-225

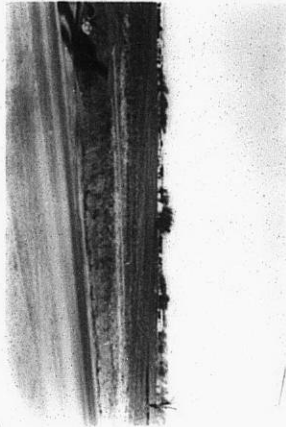


5

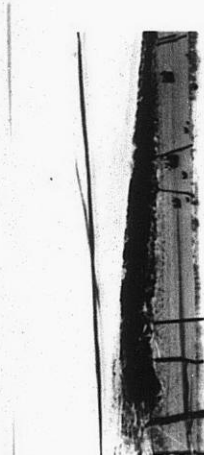


6

IRE



7



8

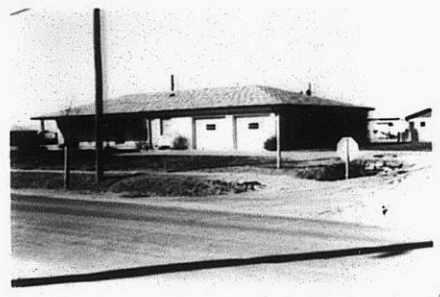
IRE

IRE

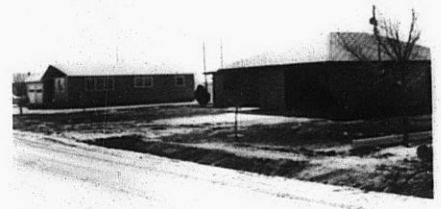
8110-208



9



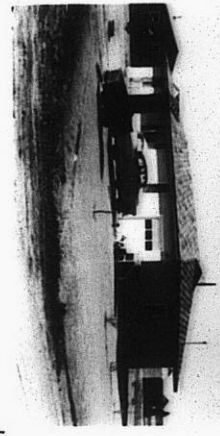
10



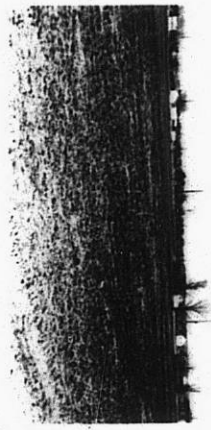
11



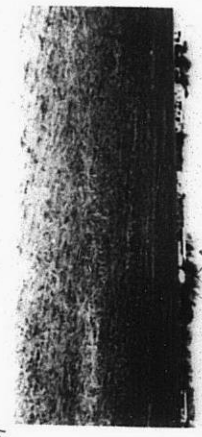
12



13



15



14

4

319

34X