

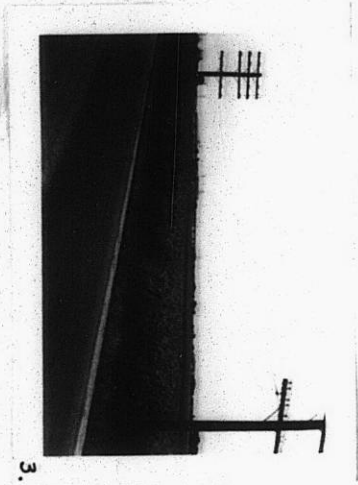
SCZ-0126

NO. SCZ-0126 R-1 TO E
Desc NORTH SIDE OF 21ST STREET BETWEEN RIDGE ROAD AND
TYLER ROAD C-OW-B
BY ELMER WENINGER
DOA BODY ACTION NOTICES
9-21-61 MAPC recommend denial
10-5-61 B.C.C. defn
10-14-61 "KAL" "HIS" "S"
Appraiser Just and Said 3.00
file discarded 2-19-82
RESOLUTION NO. _____ PUBLISHED Nov. 7, 1961

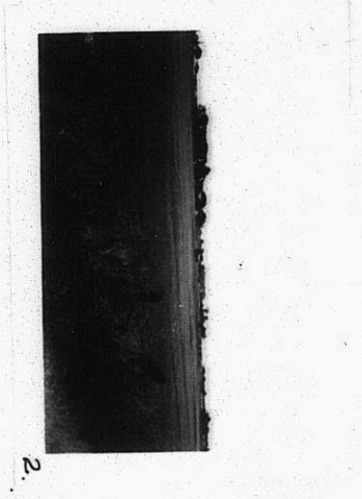
STE

XTE

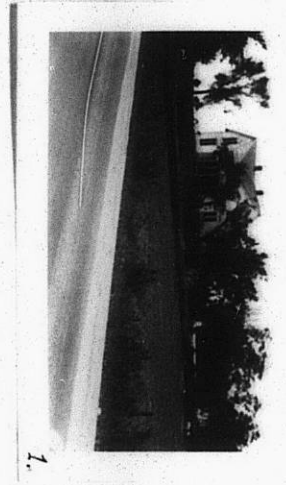
SCZ-0126



3.



2.



1.

SCZ-0126

121

121