

NO. scz-0168 R-1 to C

Desc On the west side of Maize Road between Central  
and Maple

BY A. L. Bradshaw  
DOA BODY ACTION NOTICES

5-21-64 MAPC App suby to platting

7-16-64 7 Maps Withdrawn by  
Applicant

file discarded 2-23-82

closed 7-16-64

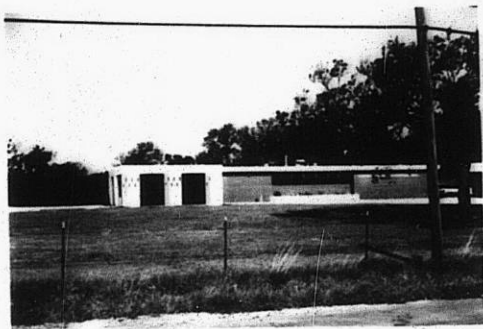
RESOLUTION NO. \_\_\_\_\_ PUBLISHED \_\_\_\_\_

~~scz-0124~~  
SCZ-0168

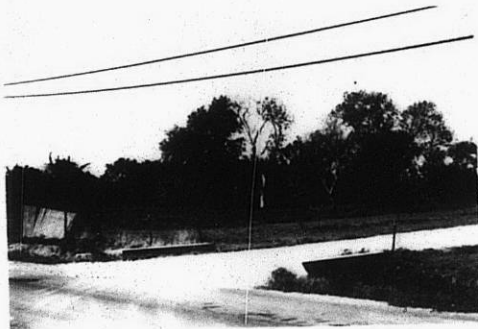
219

247

502-0168



1



2

Suical  
No. 103/AC



3



4



5

329

34x