

NO. SCZ-0172 R to R-1

Desc On the E side of K-15 (SE Blvd.) in an area  
N of 91st St. South

BY Derby Nursing Home, Inc. by Charles English, Pres.

DDA	BODY	ACTION	NOTICES
7-10-64	DCPC	App.	
9-17-64	MAPC	App.	

10-2-64 LCol Approved

closed 10-2-64

file discarded 2-23-82

RESOLUTION NO. \_\_\_\_\_ PUBLISHED 10-16-64

T21-202

SCZ-0172

137

137

502-0172



1.



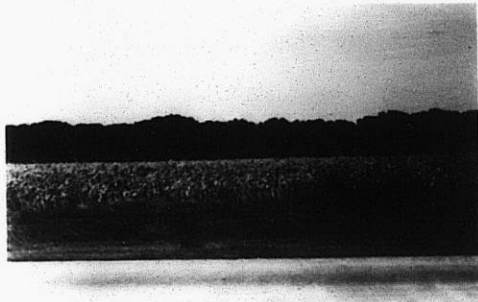
2.



3.



4.



5.



6.

502

502