

NO. SCZ-0177 R-1 to E  
Desc North side of Central in an area west of Greenwich  
Road  
BY Cline D. & Esther J. Cadle  
DOA BODY ACTION NOTICES  
3-4-65 MAPC Approve subject to 10'  
dedication for Central  
3-18-65 B.C.C. Approved as recom.  
Closed 3-18-65  
File discarded 2-23-82  
RESOLUTION NO. \_\_\_\_\_ PUBLISHED 3-31-65  
T21-202

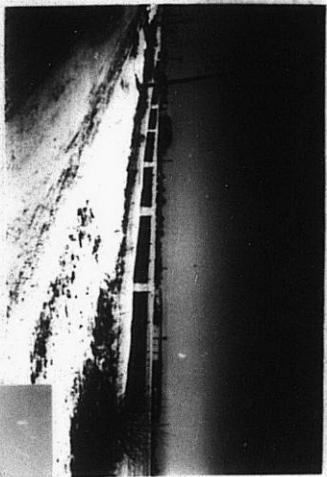
SCZ-0177

319

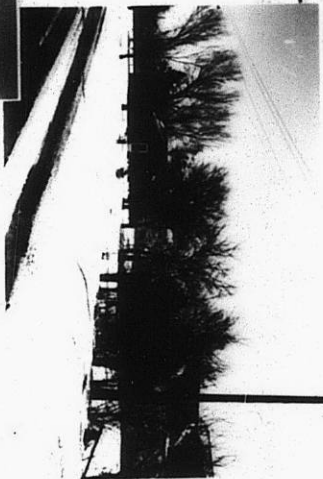
347

XBE

30



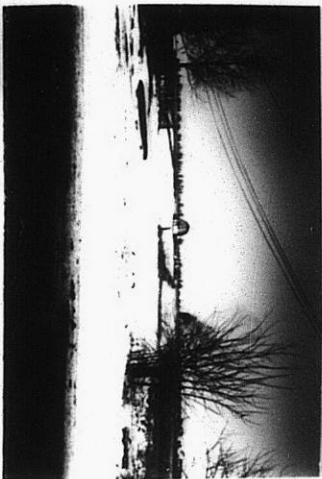
1.



2.



3.



4.



5.

SG2-0177