

NO. SCZ-0208

"E" to "R-1"

DESC. At the northeast corner of 47th St. South
and K-15 Highway

BY: Earle K. June by Don C. Moehring

D.O.A.

BODY

ACTION

NOTICES

4-27-67

MAPC

Approve subject to
platting (Earle June ass)

~~5-17-67~~

BlaC

Approved subject to
platting & withholding
publication till plat is
recorded

Closed 5-17-67

RESOLUTION NO.:

none

PUBLISHED:

6-23-67

T9-202

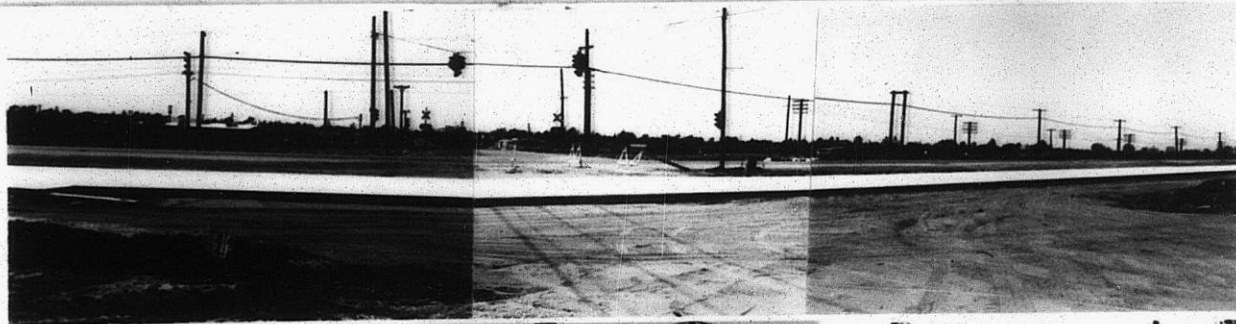
file discarded 2-23-82

SCZ-0208

131

XBE

1.



2.



3.



4.



502-0208

310

34x