

NO. SCZ-0212

"R" to "R-1"

DESC. On the north side of 111th Street South in an  
area west of the Big Arkansas River

BY: Gertrude Frischenmeyer by Clark Construction Co.

| <u>D.O.A.</u>  | <u>BODY</u> | <u>ACTION</u>                          | <u>NOTICES</u> |
|----------------|-------------|--|----------------|
| <u>6-22-67</u> | <u>DCPC</u> | <u>Concur with MCPC recommendation</u> |                |
| <u>7-10-67</u> | <u>MCPC</u> | <u>Deferred two weeks</u>              |                |
| <u>7-13-67</u> | <u>MAPC</u> | <u>Deferred two weeks</u>              |                |
| <u>7-24-67</u> | <u>MCPC</u> | <u>Deny "R-1"</u>                      | <u>(OVER)</u>  |

RESOLUTION NO.:

file discarded 2-23-82  
PUBLISHED:

ma\_202

Closed 9-6-67

SCZ-0212

11E

11E



1.



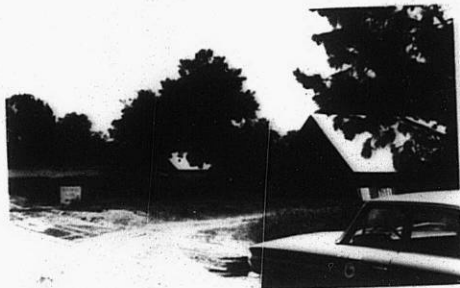
2.



3.

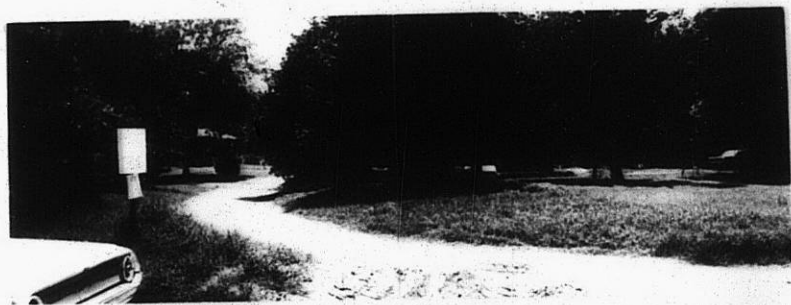


4.



5.

502-0212

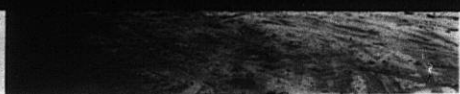


6.

502-0212

319

34X



3.

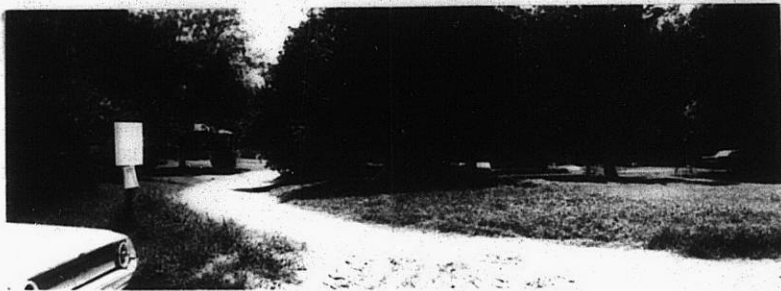


4.



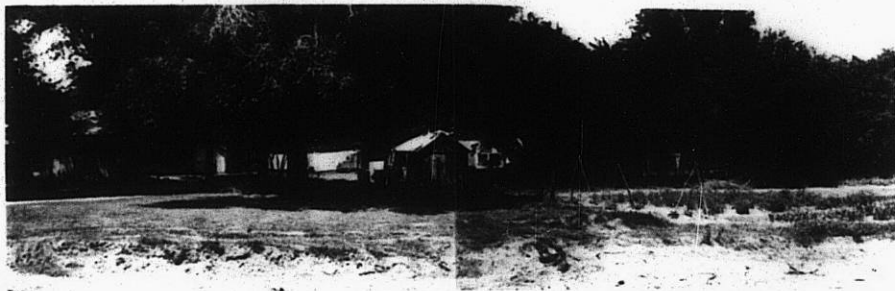
5

502-0212



6.

502-0212



7.

310

310