

NO. SCZ-0226 "R-1" & "LC" to "E"

DESC. Northeast corner of Hoover and 21st Street.

BY: Forrest Berry by Louis W. Cates
D.O.A. BODY ACTION NOTICES

4-10-69 MAPC deferred

4-28-69 map c Approved "E" for part
"BB" for remainder

5-14-69 B Co C deferred

6-11-69 B Co C continued

7-2-69 B Co C Denied

RESOLUTION NO.: _____ PUBLISHED:

T9-202

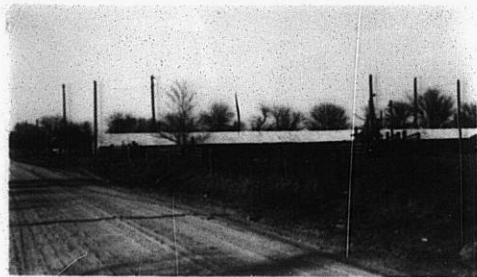
Closed file discarded 2-23-83

SCZ-0226

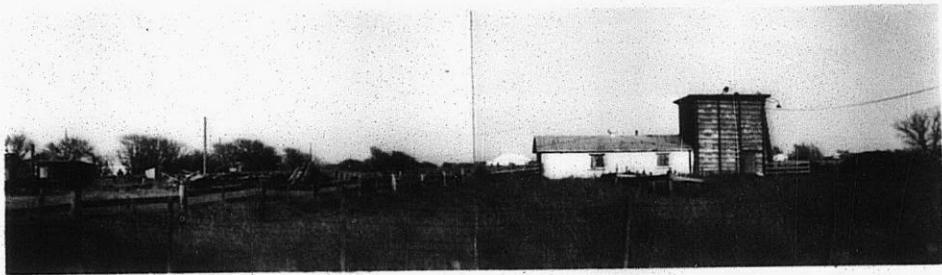
311

34X

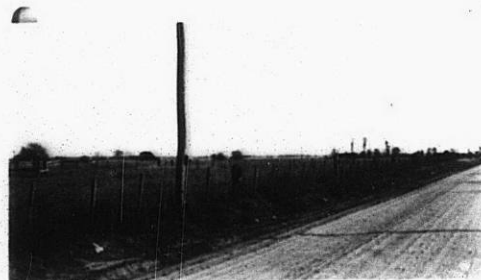
9220-208



1



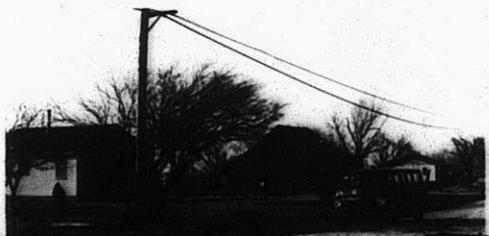
2.



3.



4.

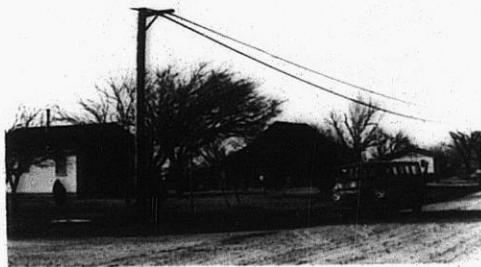


113

113

3.

4.



5.

6.

7.



SC2-
0226

8.

9.

31

31