

NO. SCZ-0278

"R-1" to "E"

DESC. In an area 1/2 mile south of 29th Street and west
of Hoover.

BY: Superior Sand, Inc. by E. D. Ritchie

<u>D.O.A.</u>	<u>BODY</u>	<u>ACTION</u>	<u>NOTICES</u>
<u>2-24-72</u>	<u>MAPC</u>	<u>Approve</u>	
<u>2-8-72</u>	<u>B.C.C</u>	<u>approve</u>	

3-9-72

Resolution Published

T9-202

file discarded 2-23-82

SCZ-0278
00

319

34x

SC2-0278

1.



2.



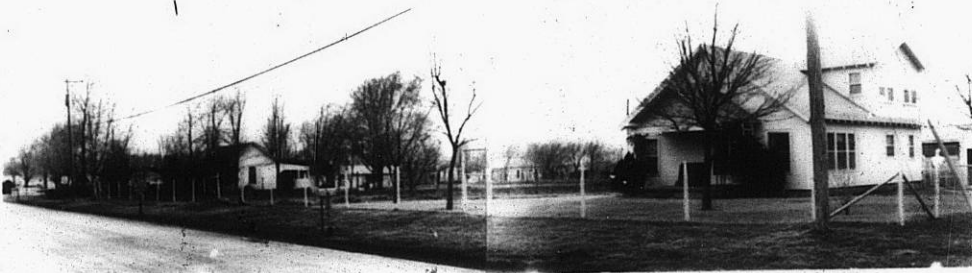
3.



4.



5.



6.



STP

34X

3.



4.



5.



6.



7.



SCZ-0278

8.



9.

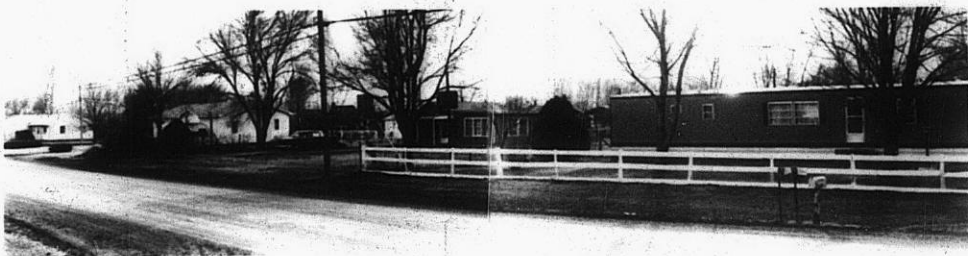


SCZ-0278

3E

3E

9.



SCZ-0278

10.



11



319

34x