

NO. SCZ-0279

"R-1" to "E"

DESC. At the northeast corner of Maize Road and K-42

Highway

BY: John E. Dugan by Paul V. Dugan

D.O.A.

BODY

ACTION

NOTICES

4-13-72

MAPC

Approve subg to plat

5-3-72

BCoC

Approve as recommend

July 13, 1973

Resolution Published

T9-202

file discarded 2-23-82

SCZ-0279

311

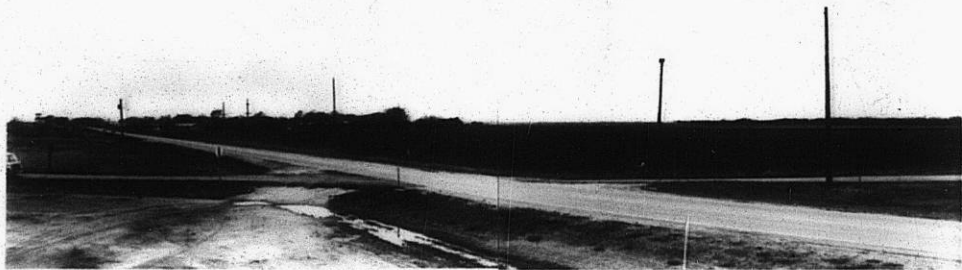
311

SC2-0279

1.

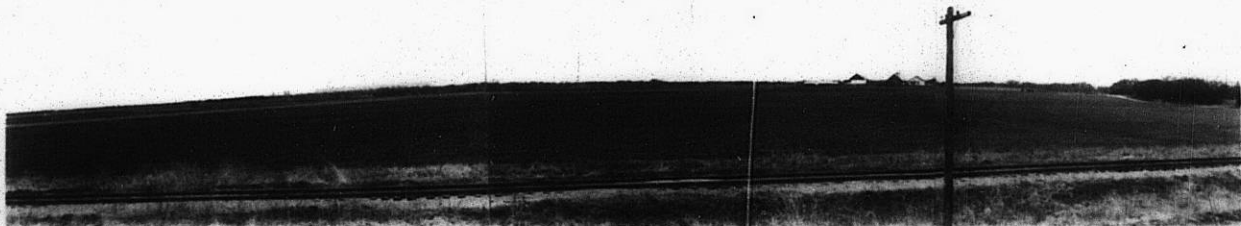


2.



SC2-
0279

3.



13E

14E

SC 0279

3.



4.



5.



6.



7.

8E

8E