

NO. SCZ-0285

"R-1" & "LC" to "E"

DESC. On the south side of Kellogg in an area west of
the Kansas Turnpike

BY: M. M. Dodson, et. al. by John R. Stallings

D.O.A.	BODY	ACTION	NOTICES
5-25-72	MAPC	deny	
6-7-72	B Co C	Approve - subj to platting	*

closed - failure to plat

file discarded 2-23-82

Resolution Published

T9-202

SCZ-0285

319

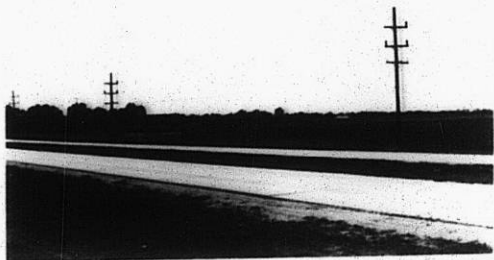
34x

SC2-0285

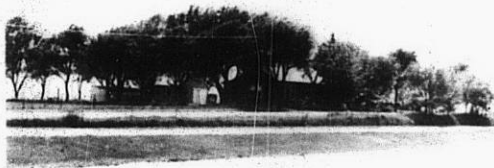
1.



2.



3.



319

34x