

NO. SCZ-0287

"R-1" to "E"

DESC. In an area west of Hoover and north of 21st

Street North

BY: Ritchie Construction Co, Inc. by E. D. Ritchie

D.O.A.	BODY	ACTION	NOTICES
--------	------	--------	---------

5-25-72	MAPC	<i>approve only to platting</i>	
---------	------	---------------------------------	--

6-7-72	B.C.C.	<i>approved as recommended</i>	
--------	--------	--------------------------------	--

*file discarded 2-23-80*

*July 13, 1973* Resolution Published

T9-202

SCZ-0287

131

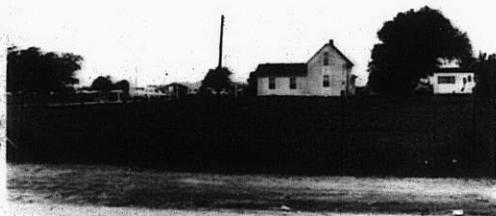
X12

502-0287

1.



2.



3.



4.



5.



6.



7.



502

502