

NO. SCZ-0288

"R-1" + "R" to "AA"

DESC. On the east side of Maize Road in an area north
of Maple

BY: Rolling Hills Country Club, Inc. by K. O. Taylor

D.O.A.	BODY	ACTION	NOTICES
6-22-72	MAPC	APPROVE, subj to petitioning for agreement, platting, guarantee for time standards & navigational easement	

2-5-72 BCoC APPROVE as recommended

Nov. 15, 1972 Resolution Published

T9-202

file discarded 2-23-82

SCZ-0288

113

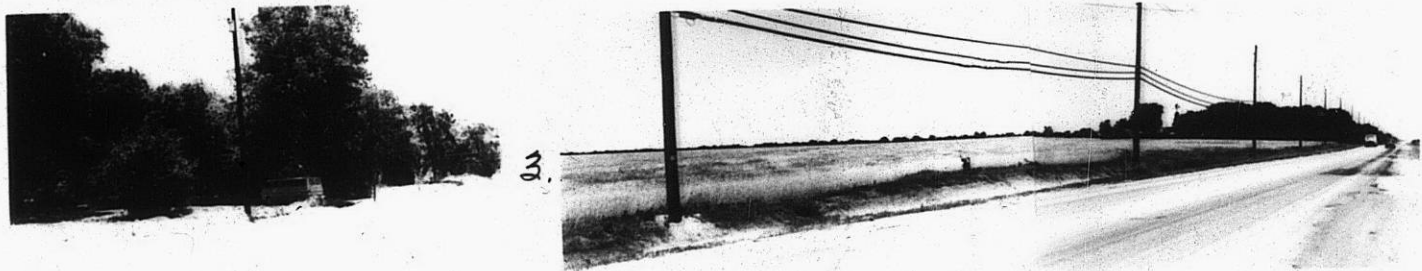
113

502-0288

1.



2.



4.



319

XBE