

NO. SCZ-0301

"R-1" to "E"

DESC. At the Southeast corner of U.S. highway 54 and  
Colwich Road

BY: Hazel & Harry Shepler by Eugene G. Coombs

<u>D.O.A.</u>	<u>BODY</u>	<u>ACTION</u>
<u>1/22/73</u>	<u>GCPC</u>	<u>No quorum</u>
<u>2/8/73</u>	<u>MAPC</u>	<u>Return to GCPC for reconsiderati</u>
<u>2/26/73</u>	<u>GCPC</u>	<u>Recommended "LC"</u>
<u>3.8.73</u>	<u>MAPC Approved "LC" only to platting</u>	
<u>3.21.73</u>	<u>B CoC approved</u>	
<u>10-17-75</u>	<u>Resolution Published</u>	
<u>T9-202</u>	<u>file discarded 2-23-82</u>	

SCZ-0301

319

34x

302-0301

1.



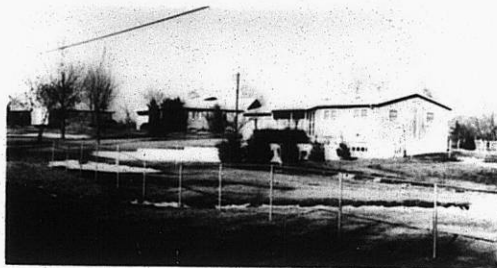
2.



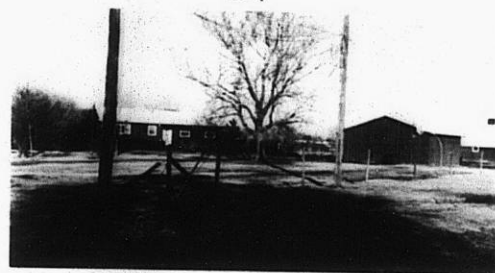
3.



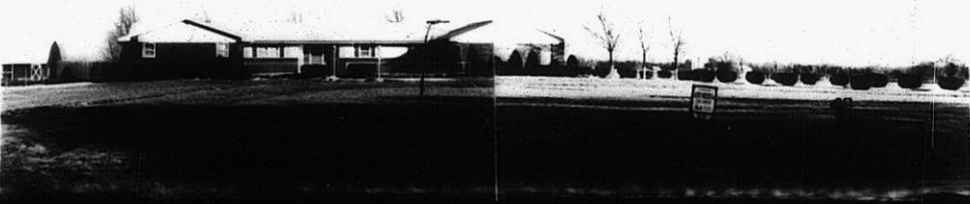
4.



5.



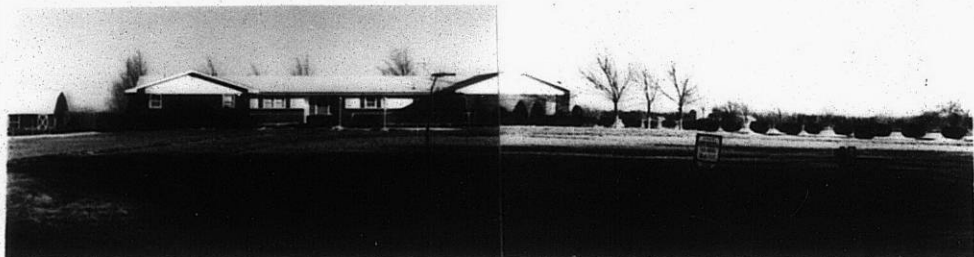
6.



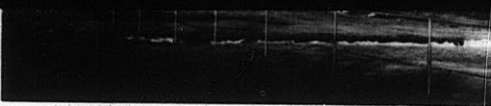
310

X 32

4.



5.



6.



7.



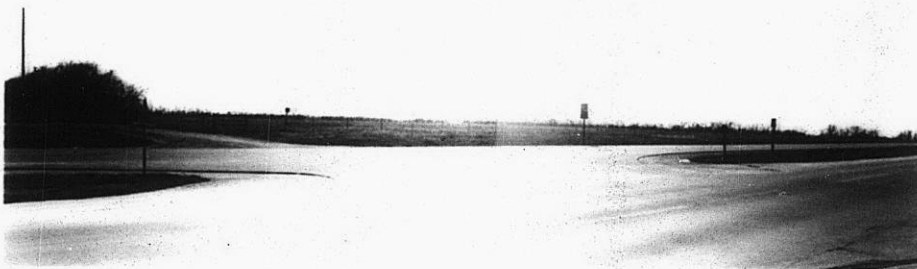
9.

10.



SCC-0301

11.



319

34x