

NO. SCZ-0302

"R-1" to "LC" #

"R-1" to "AA"

DESC. At the Northwest corner of Seville & Kellogg

BY: Gene Miles by Kenneth O. Taylor

D.O.A.                      BODY                      ACTION

2/22/73                      MAPC                      Not approved

2-7-73                      BCoC                      Referred back to MAPC

2-23-73                      MAPC                      Approved subject platting  
setbacks, dedications,

Associated Conditional Use CU-146 easements, + noise  
control

August 7, 1974 Resolution Published

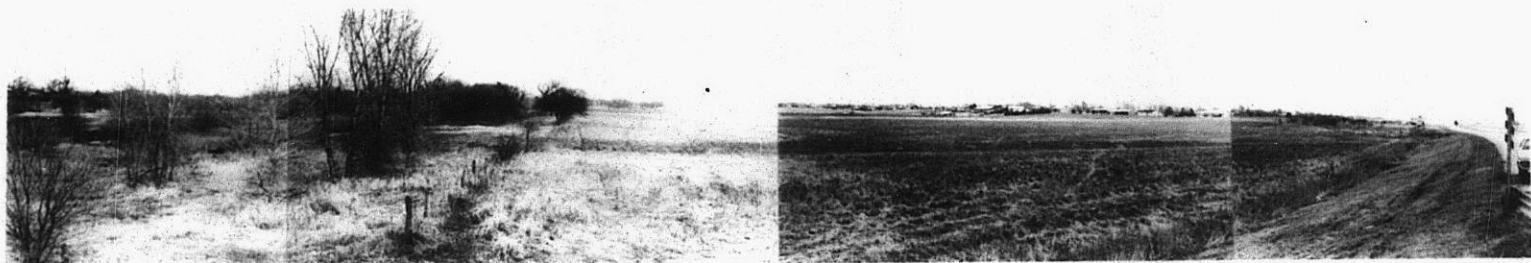
T9-202                      file discarded 2-23-82 over

SCZ-0302

310

34X

SC2 - 0302



1.



2.



3.



4.

SC2 - 0312

XBE

2.

3.

4.



SC2-0312

5.



6.



7.



8.

310

X 3/4



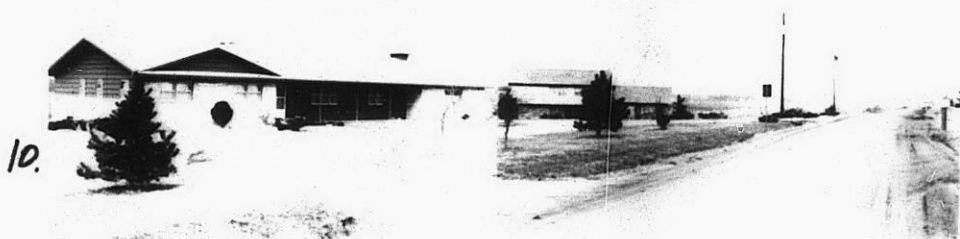
7.



8.



9.



10.

SC2 - 0302



11.



12.



13.

310

34x