

NO. SCZ-0304

"R" to "E"

DESC. At the Northwest corner of 69th and Meridian

BY: Lloyd N. & Yola B. Gilmore

<u>D.O.A.</u>	<u>BODY</u>	<u>ACTION</u>
<u>4.2.75</u>	<u>VCCPC</u>	<u>Approved 5-0</u>
<u>4-26-73</u>	<u>MAPC</u>	<u>Approved subj to platting</u>
<u>5-9-73</u>	<u>BCoC</u>	<u>Approved as recommended</u>
<u>1-8-75</u>	<u>BCoC</u>	<u>reapproved new resolution</u>
		<u>file discarded 2-23-82</u>
<u>1-10-75</u>		<u>Resolution Published</u>

T9-202

SCZ-0304

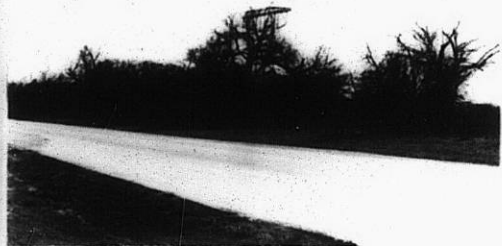
121

121

SC2-0304



1.



2.



3.



4.



5.



6.



7.

SC20304

12E



2.



3.



4.

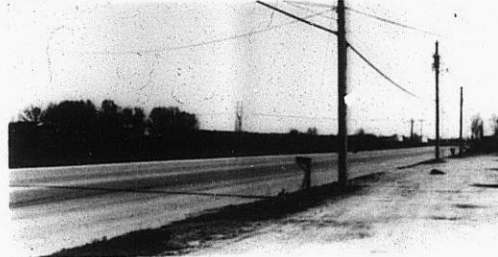


5.

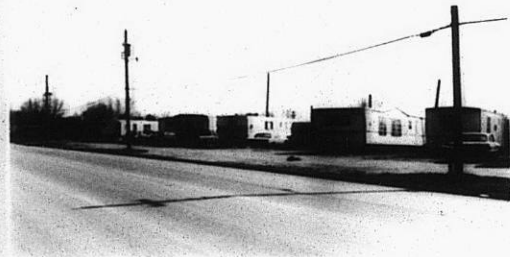


6.

SC20304



7.



8.



9.



10.

11.

12.

13.

319

34x