

NO. SCZ-0313

"R-1" to "AA"

DESC. South side of Harry approximately 1/4 mile
east of 143rd Street

BY: Wichita Veterans Memorial Assoc., Inc. et.al

D.O.A.	BODY	ACTION
7-26-73	MAPC	<i>no questions</i>
8-3-73	MAPC	<i>Approved out to plotting</i>
8-15-73	Bldg CoC	<i>Approved as recommended</i>
		<i>closed</i>

Aug 18, 1977 Resolution Published

T9-202

file discarded 2-23-82

SCZ-0313

319

34x

SC2-0313



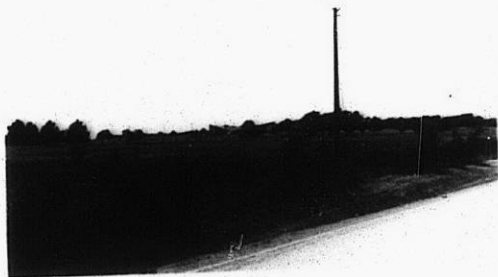
1.



2.



3.

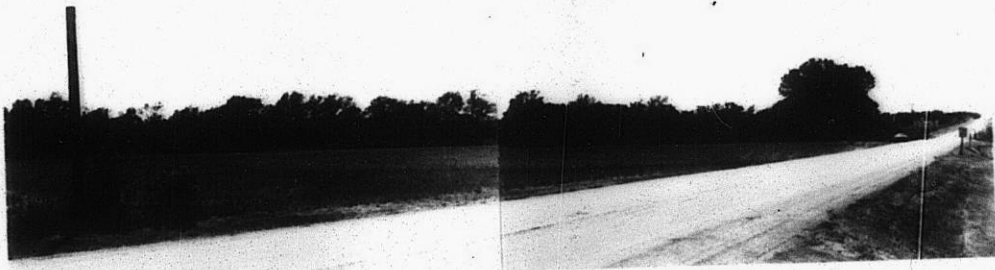


4.

5.



6.



7.



1.

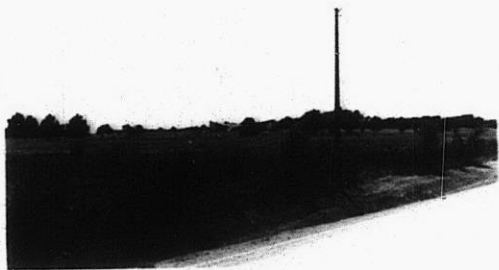


2.



3.

4.



5.

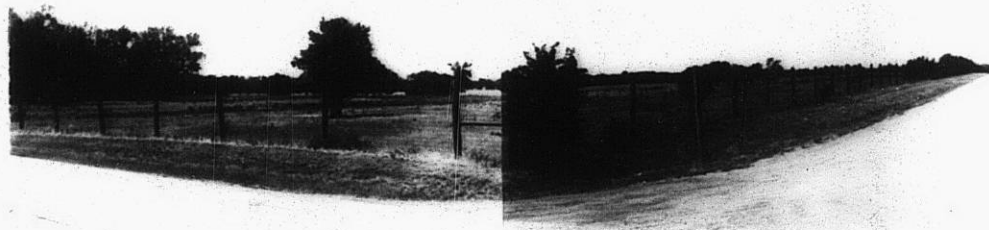


6.



7.

8.



310

34x