

NO. SCZ-0316

"R-1" to "LC"

DESC. On the South side of Harry Street approximately

1/2 mile West of 143rd Street East

BY: Brand Development Corporation by PEC

D.O.A.

BODY

ACTION

10-11-73

MAPC

Withdrawn by applicant

11-8-73

MAPC Reconsidered and

(file discarded 2-23-82) accepted proposal to  
reopen on 30-day note

WITHDRAWN BY APPLICANT

CASED CLOSED

Resolution published

T9-202

Closed - 12-18-81 (see file)

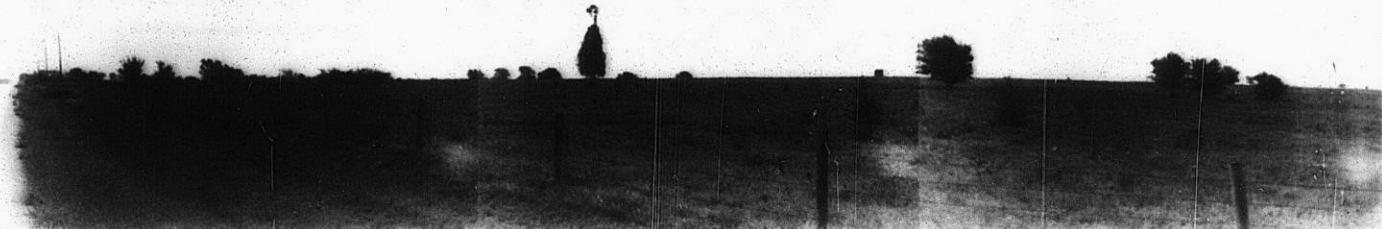
SCZ-0316

30

34

SC2 - 0316

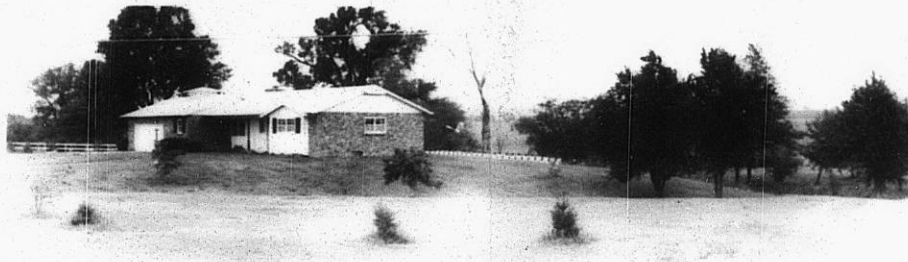
1.



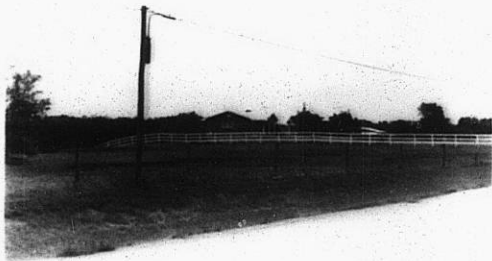
2.



3.



4.



5.



319

34X