

NO. SCZ-0320

"R" to "LC"

DESC. At the Northeast corner of 69th Street North
and Broadway

BY: Thomas G. & Ronella Williamson by Roger Sherwood

D.O.A.

BODY

ACTION

12-3-73

VCCPC

Approved

12-13-78

MAPC

Expand. sully. to
plotting

12-26-78

BCoC

Approved as recomm.

T9-202

file discarded 2-23-81

Resolution Published

11-16-81
closed failure to plat

SCZ-0320

319

34x

SLZ-0320

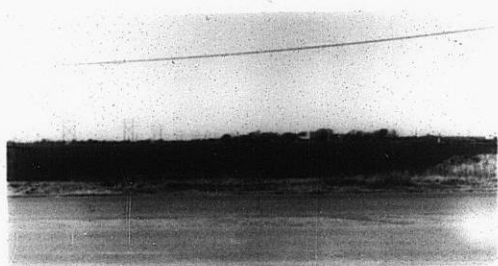
1.



2.



3.



4.



5.



6.

SLZ

0320