

NO. SCZ-0338 (*assn. CV-172*) "R-1" to "AA"

DESC. Southwest corner of Harry and Cambridge St.

*files discarded*  
*5-17-83*

BY: Frank Barton, et.al.

D.O.A.	BODY	ACTION
1-23-75	MAPC	<i>Appeal subject to</i>

*planning*

*2-12-75 BCcC referred back to mapc*

*2-27-75 mapc appeal*

*DVER*  
Resolution Published *[Signature]*

T9-202

*(see note on reverse)*

SCZ-0339

613

152

NO. SCZ-0339

"R" to "C"

DESC. East side of Broadway in an area approximately  
1/4 mile south of 71st St. South.

BY: Bradford Const. Company

D.O.A.	BODY	ACTION
HCPC	2-27-75	<i>Approved</i>
MAPC	3-13-75	<i>App subject to platting</i>
<i>B.C.C.</i>	<i>4.2.75</i>	<i>Approved subject to platting</i>
		<i>closed</i>

*Oct. 11, 1976* Resolution Published  
T9-202 *file discarded 2-23-82*

SCZ-0339

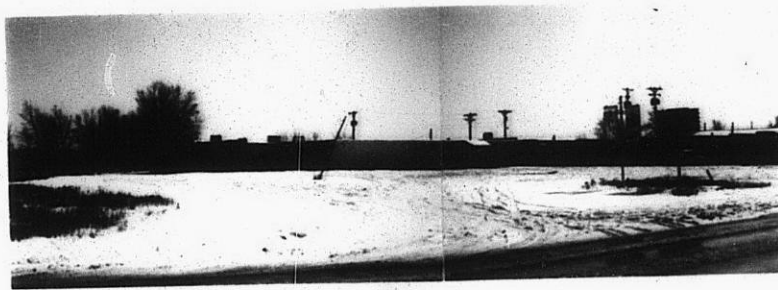
311

34X

SC2-0339



1.



2.



3.



4.

SC2-0339

34X



1.



2.



3.



4.

JCZ-0339



6.

34

X42