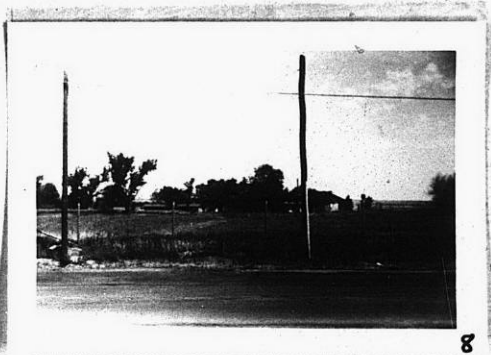


2-0090

Wabash

ORDER BY THIS NUMBER

NO. 520



8



7

NO. Z-0090 "B" to "BB"

Desc S side of 21st in an area bet. Battin & Pinecrest

BY Center Development Co., Inc.

DOA	BODY	ACTION	NOTICES
6-5-58	MAPC	Approved	
6-17-58	BCC	"	

file discarded 2-1-82

RESOLUTION NO. 29 PUBLISHED 7-3-58

T21-201

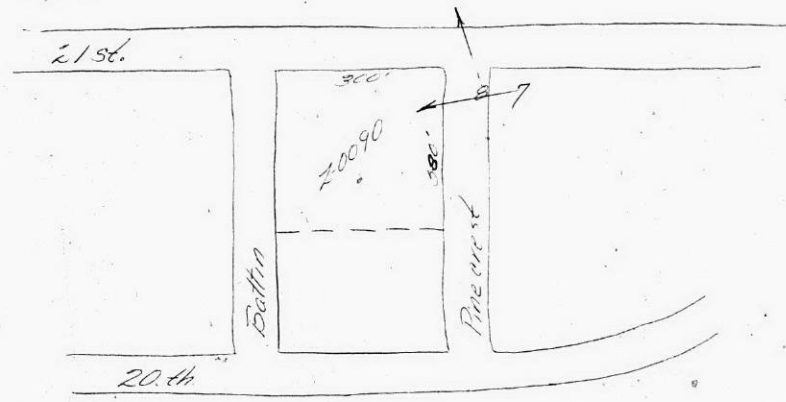
314

XFE



7

2-0090



ATE

ATE