

NO. Z-0032 "A" to "LC"

Desc WS Seneca in an area bet. May & Dora

BY Carmen Mosaic Tile Co.

DOA	BODY	ACTION	NOTICES
L-7-58	MAPC	Approve to "B" & "LC"	
1-21-58	BCC	" as recom.	

1-21-58 BCC " as recom.

RESOLUTION NO. 31 *file discarded 2-1-82* PUBLISHED 10-2-58  
T21-201

311  
34x

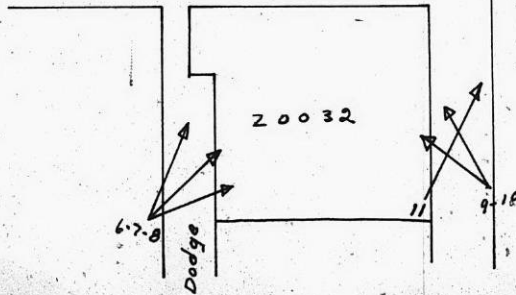
Photos 20032



No. 2-1031C

Seneca

Dora



34x