

Z-0100 and 101

NO. <u>Z-0101</u>		<u>"AA" to "B"</u>	
Desc <u>NE corner of Woodlawn & 12th</u>			
BY <u>Lawrence, Inc.</u>			
DOA	BODY	ACTION	NOTICES
8-7-58	MAPC	Approved	
9-2-58	BCC	"	
<i>file discarded 2-1-82</i>			
RESOLUTION NO. <u>31</u>	PUBLISHED		<u>10-2-58</u>
T21-201			

NO. <u>Z-0100</u>		<u>"AA" to "A"</u>	
Desc <u>E of Woodlawn N of 12th & NE of Whittifield Lane</u>			
BY <u>Lawrence, Inc.</u>			
DOA	BODY	ACTION	NOTICES
8-7-58	MAPC	Approved	
9-2-58	BCC	"	
<i>file discarded 2-1-82</i>			
RESOLUTION NO. <u>31</u>	PUBLISHED		<u>10-2-58</u>
T21-201			

113
112

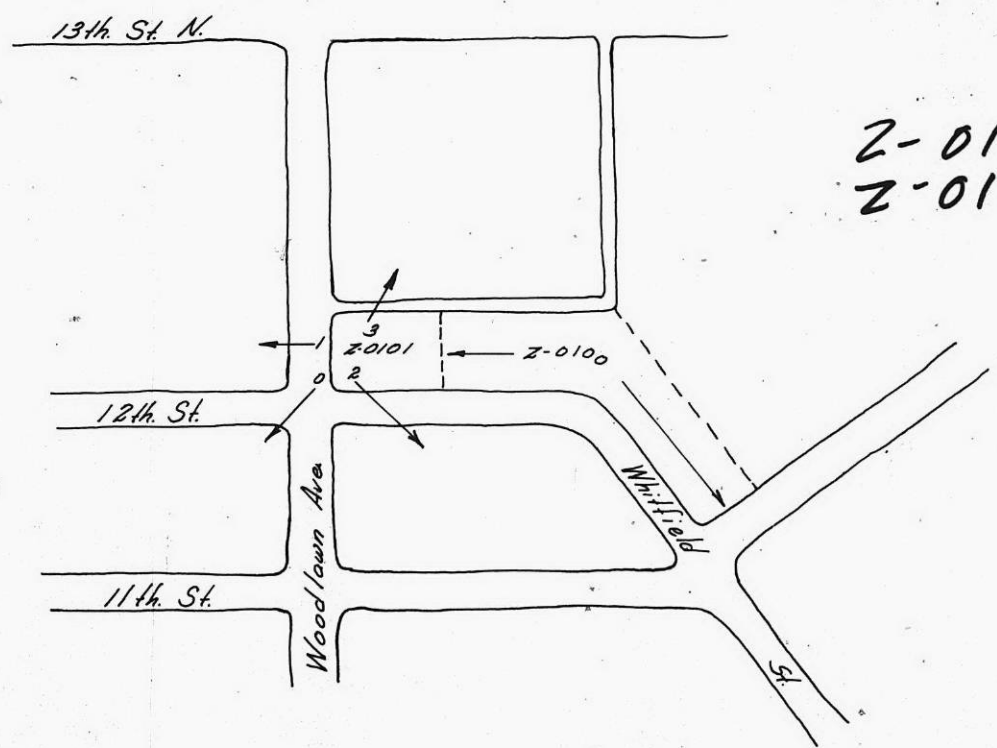
Z-0100 and 101



13th St. N.

Z-0100

MS
XFE



Z-0100
010-Z

137
138