

Z-0131

NO.	Z-0131	"A" to "B"	
Desc	ES Oliver bet. Funston & Mt. Vernon		
BY	Joseph E. Musser, D.D.S.		
DOA	BODY	ACTION	NOTICES
1-15-59	MAPC	Deny	
1-27-59	BCC	"	
<i>file discarded 2-1-87</i>			
RESOLUTION NO.	PUBLISHED		
T21-201			

ATE
B4X

Z-0131

NO.	Z-0131	"A" to "B"	
Desc	ES Oliver bet. Funston & Mt. Vernon		
BY	Joseph E. Musser, D.D.S.		
DOA	BODY	ACTION	NOTICES
1-15-59	MAPC	Deny	
1-27-59	BCC	"	
<i>file discarded 2-1-87</i>			
RESOLUTION NO.	PUBLISHED		
T21-201			

314

34x

Clyde M. Baumhann
Fred J. DeWitt
John F. ... & Reeves

CERTIFICATE OF
Clyde M. Baumhann, D.D.
Civil Engineers & Surveyors

Registered Professional Engineers

2322 EAST WENTWOOD
WICHITA, KANSAS
PHONE NUMBER 37231

State of Kansas)
) SS

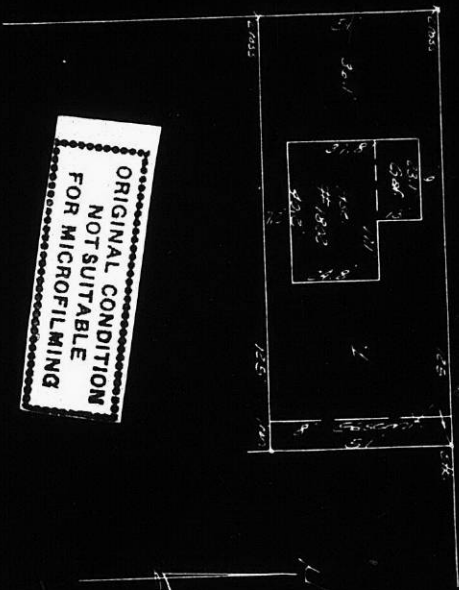
July 24, 1958

County of Sedgewick)
I, Clyde M. Baumhann, Surveyor in aforesaid county and
state, do hereby certify that I did on this 24th day of July, 1958
survey Lot 1, Huxett Addition to Wichita, Kansas.

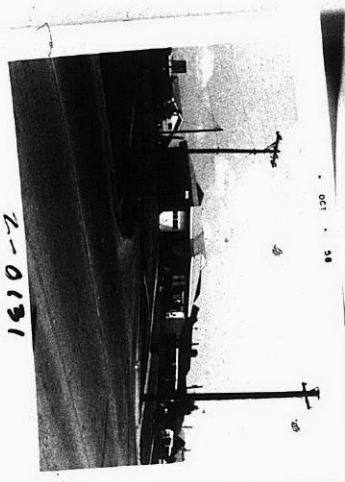
On said lot in house No. 1002 with an attached garage
which is in the corner of all boundary lines. There are no encroachments
on said lot by buildings on the adjacent lots.

The accompanying plat is a true and correct exhibit of
said survey for mortgage title insurance.

Clyde M. Baumhann
Surveyor



ORIGINAL CONDITION
NOT SUITABLE
FOR MICROFILMING



2-0131



Oct. 58

ATC

XBE

Clyde M. Pausman
Fred J. Deak
John T. & S. Hayes

Clyde M. Pausman Co.
Civil Engineers & Surveyors

Registered Professional Engineers

July 24, 1956

2322 EAST HILLWOOD
WICHITA, KANSAS
PHONE NUMBER 37431

State of Kansas)
County of Sedgewick) SS
I, Clyde M. Pausman, Surveyor in aforesaid county and
state, do hereby certify that I did on this 24th day of July, 1956
survey Lot 1, Hyde's Addition to Wichita, Kansas.

On said lot is house No. 1802 with an attached garage
which is in the corner of all boundary lines. There are no encroachments
on said lot by buildings on the adjacent lots.

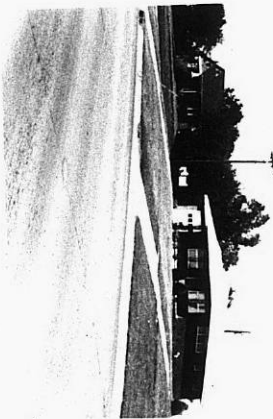
The accompanying plat is a true and correct exhibit of
said survey for mortgage title insurance.

Clyde M. Pausman
Surveyor



001 - 58

001 - 58

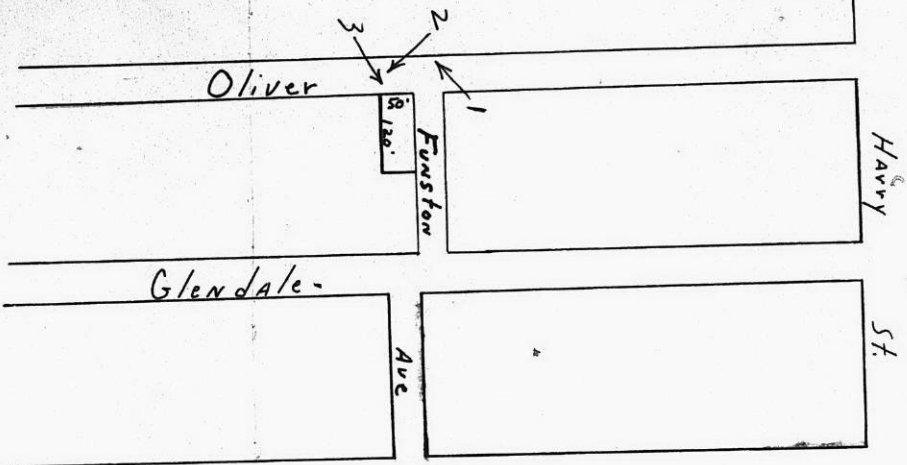


2-0131

473

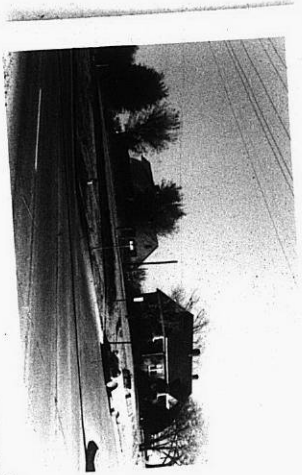
473

Clapp
Park



2-0131

XBE



3



4



Wabash
MADE BY THE NUMBER
NO. 520

Z-0131

KTE

KTE