

Z-0234

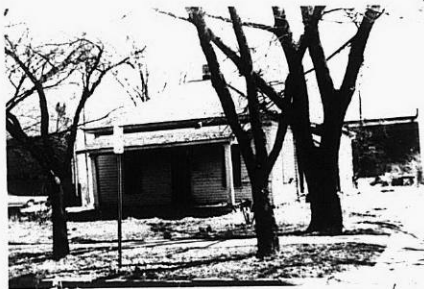
Z-0234

NO. <u>Z-0234</u>		"RB" TO "E"	
DESC <u>EAST SIDE OF SANTA FE BETWEEN LINCOLN STREET</u> <u>AND ZIMMERLY STREET.</u>			
BY <u>S. L. GARDINER, 620 S. ROOSEVELT,</u>		MY <u>2-3394</u>	
DOA	BODY	ACTION	NOTICES
<u>4-21-60</u>	<u>MAR</u>	<u>Approve</u>	
<u>5-3-60</u>	<u>Bd CC.</u>	<u>Approve</u>	
<u>file discarded 2-1-82</u>			
RESOLUTION NO. <u>68</u>	PUBLISHED <u>5-26-60</u>		<u>6-14-60</u>

311

B4X

7-0234



319

34X