

Z-0241

NO. Z-0241 "AA" & "BB" TO "LC"

DESC EAST SIDE OF SENECA BETWEEN DIANE AND 1/2 BLOCK  
NORTH OF 30TH STREET SOUTH.

BY CHARLES G. COOK, ROBERT H. NELSON, AGENT NOTICES  
DOA BODY ACTION

6-2-60 MAPC approve.  
6-14-60 BdCC approve.

file discarded 2-1-82

RESOLUTION NO. 70 PUBLISHED 6-23-60

311

B4X

37E

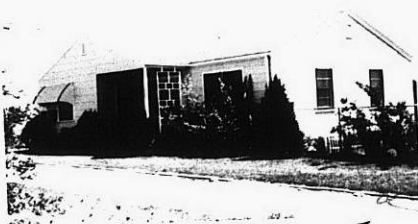
37E



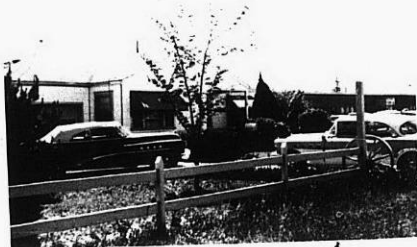
1.



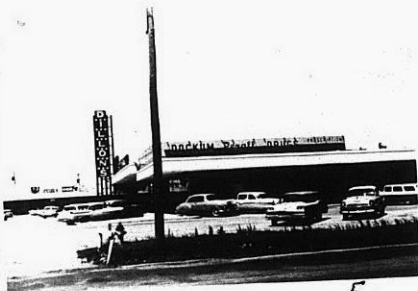
2



3



4.



5.



6



7



8

148-2

2-0241

2-0241

NO. Z-0241 "AA" & "BB" TO "LC"

Desc EAST SIDE OF SENECA BETWEEN DIANE AND 1/2 BLOCK  
NORTH OF 30TH STREET SOUTH.

BY CHARLES G. COOK, ROBERT H. NELSON, AGENT  
DOA BODY ACTION NOTICES

6-2-60 MAPC Approve.  
6-14-60 BdCC Approve.

file discarded 2-1-82

RESOLUTION NO. 70 PUBLISHED 6-23-60

314

34X

313

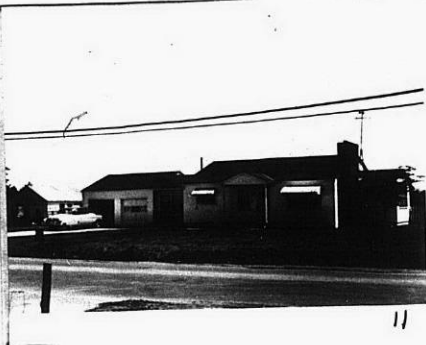
313



9



10



11



12



13



14

TAKEN - 5-10-60

2-0241