

Z-0283

NO.	Z-0283	BB TO LC
DESC	NORTH SIDE OF 21ST BETWEEN ESTELLE AVE. ON THE EAST AND PRINCE AVE. ON THE WEST.	
BY	AARON SMITH, BYRON & LETTY SMITH	
DOA	BODY	ACTION
		NOTICES
	12-1-60 MAPC Paper for plotting	
	12-15-60 MAPC Paper for plotting	
	1-10-61 BICC Appraiser	
	file discarded 2-1-82	
RESOLUTION NO.	87	PUBLISHED 1-20-61

31A

34X

2-0283



1



2



3



4



5



6

34

34x

Z-0284

NO. <u>Z-0284</u>		<u>AA to LC</u>	
DESC <u>S SIDE OF 21ST STREET BETWEEN OLIVER AND WOODLAWN.</u>			
BY <u>AVA &amp; VIRGINIA BLASE</u>			
DOA	BODY	ACTION	NOTICES
<u>12-1-60</u>	<u>MAP</u>	<u>Report 15th, for platting</u>	
<u>12-15-60</u>	<u>MAP</u>	<u>approve</u>	
<u>1-17-61</u>	<u>approve</u>	<u>BCC</u>	
<u>file discarded 2-1-82</u>			
RESOLUTION NO. <u>86</u>		PUBLISHED <u>1-27-61</u>	

113

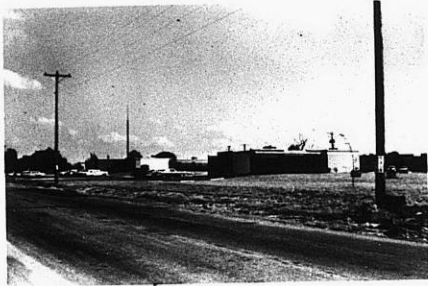
113



2-0284



2



3



4

STE

X 5E

Z-0286

NO. <u>Z-0286</u>	<u>B &amp; AA TO LC</u>		
DESC <u>LOCATED ON WEST SIDE OF WEST ST. AND SOUTH OF BICKEL</u>			
STREET _____			
BY <u>F. L. DAVIS &amp; FLORENCE ET AL.</u>	NOTICES		
DOA	BODY	ACTION	
<u>12-15-60</u>	<u>MAPC</u>	<u>Refer</u>	
<u>1-5-61</u>	<u>MAPC</u>	<u>Deny</u>	
<u>1-17-61</u>	<u>BdCC</u>	<u>Auto Review</u>	
<u>1-31-61</u>	<u>BdCC</u>	<u>Refer 1WK</u>	
<u>2-7-61</u>	<u>BdCC</u>	<u>Deny</u>	
		<u>file discarded</u>	
		<u>2-1-82</u>	
RESOLUTION NO. _____	PUBLISHED _____		

31A

34A

2-0282



1



2



3

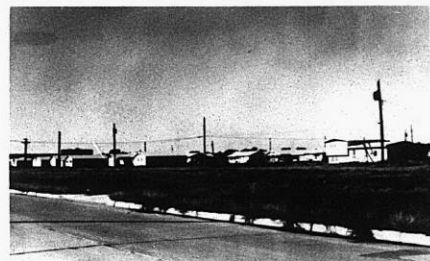
2-0286



4



5



6



131

34x



1



2



3

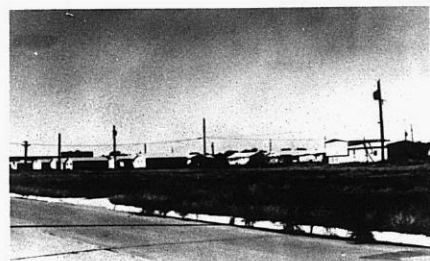
2-0286



4



5



6



7



8



9

319

34x