

Z 289

NO. <u>Z-0289</u>		FROM <u>RB</u> TO <u>B</u>	
DESC <u>ON NE CORNER OF 17TH &amp; ROOSEVELT AVE.</u>			
BY <u>CATHOLIC DIOCESE OF WICHITA</u>			
DOA	BODY	ACTION	NOTICES
	<u>12-15-60</u>	<u>MAPC</u>	<u>Approval</u>
	<u>12-27-60</u>	<u>BdC</u>	<u>Approval</u>
<u>file discarded 2-1-82</u>			
RESOLUTION NO.	<u>85</u>	PUBLISHED	<u>1-6-61</u>

318

34X

2-0289



1



No. 2-17-1

2



3



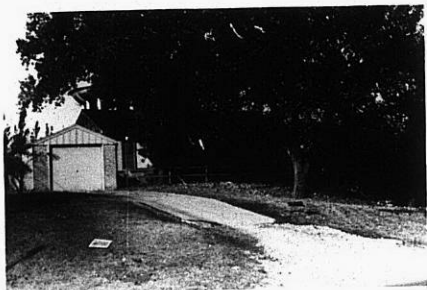
4



5



6



7



8

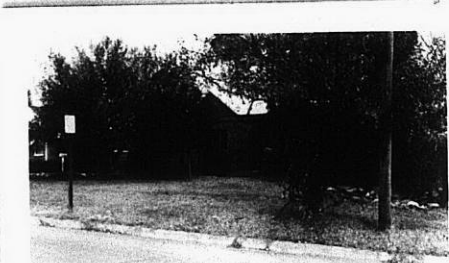


9

2-0289

511

34X



4



5



6



7



8



9

2-0289

24

31E

34X