

~~Z-0386~~

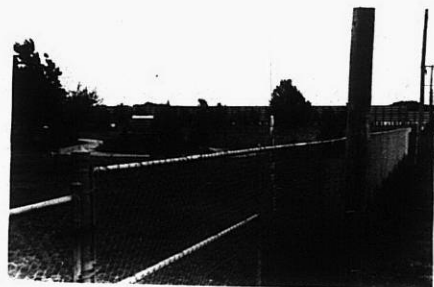
Z-0699

NO.	Z-0699	AA & A to LC
DESC	Southeast corner of Harry and Roosevelt	
BY	Melvin Simon & Associates by H. R. Kuhn & Richard	
	DOA	BOOY ACTION F. Mullins NOTICES
	9-2-65	MAPC <i>Deferred 2 weeks</i>
	9-16-65	<i>Maps App. & not forwarded till Wood Plaza is forwarded</i>
	10-12-65	<i>Rec. Deferr 1 week</i>
	10-19-65	<i>Rec. Referred to PW & deferred 2 weeks</i>
	11-2-65	<i>Rec. Approved as recommended</i>
RESOLUTION NO.	28-389	PUBLISHED 11-12-65
T9-201	Closed 11-3-65	file discarded 2-3-82

311

312

2-0699



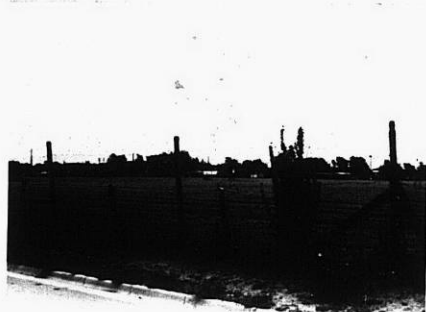
319

34x

Z-0699



7



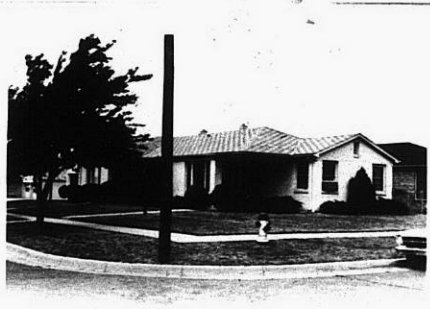
8



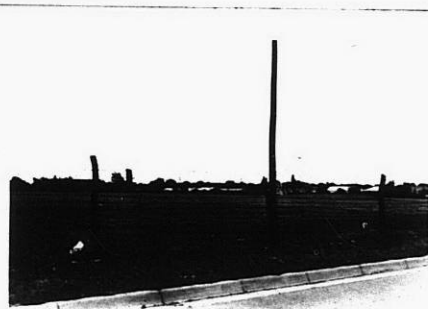
9



10



11



12

314

34X