

Z 0307

NO.	<u>7-0307</u>	C TO E	
DESC	<u>ON N SIDE OF WASSELL BETWEEN K-15 AND CLASSEN</u>		
BY	<u>O.A. DENKER & R. S. BREWER</u>		
DOA	BODY	ACTION	NOTICES
	<u>4-6-61 MAPC</u>	<u>Defert</u>	
	<u>4-20-61 MAPC</u>	<u>Denny</u>	
	5-2-61 MAPC		
	<u>7-6-61</u>		
	<u>11-2-61</u>	<u>defert indefinite</u>	<u>file discarded</u>
	<u>Closed</u>	<u>1-29-69</u>	<u>2-1-82</u>
RESOLUTION NO.		PUBLISHED	

314

34X

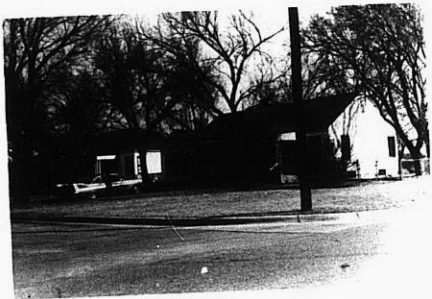


Lot 28 Block 6
Looking North West
side of property

3

B4X

Z-0307



1



2



3



4



5

Z-0307

319

341