

Z - 0334

No. ^{Z-0334} 7-0334 AA TO LC & B

DESC. IN AN AREA SOUTH OF SAVANNAH AND BETWEEN SENECA
AND OSAGE AVENUES.

By: ELLA MAGERS

D.O.A.	BODY	ACTION
<u>9-7-61</u>	<u>MAPC</u>	<u>Approved in Good Balanced Opinion</u>
<u>9-26-61</u>	<u>BCC</u>	<u>Approved MAPC Recommendation</u>

file discarded 2-3-82

RESOLUTION No.: 97 PUBLISHED: 10-5-61

314

34X



1



2

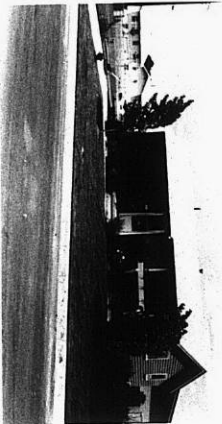


3

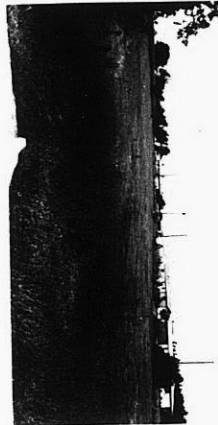
2-0334-



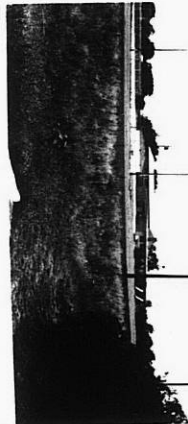
4



5



6



7

ATE

XTE