

Z-0411

NO. Z-0411 BB & B TO LC

DESC ON W SIDE OF TERRACE DR., NORTH OF 13TH

BY KEN-MAR DEVELOPMENT, INC. NOTICES

DOA BODY ACTION  
(PUBLISHED 9-28-62)

11-1-62 MAPC Approve

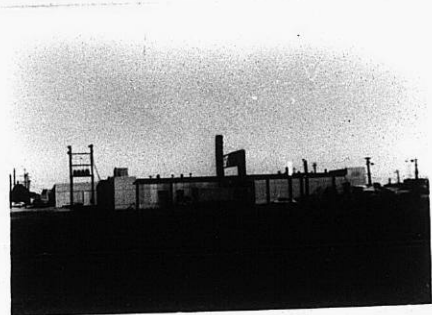
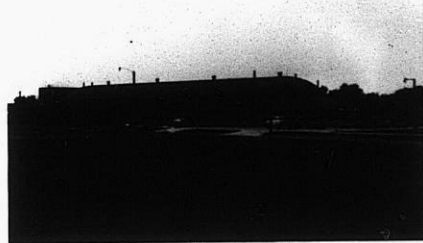
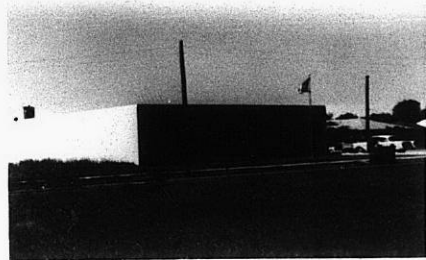
11-20-62 ACC Approve

file recorded 2-3-82

RESOLUTION NO. 124 PUBLISHED 12-8-62

1318

1318



2-0411

34

34x