

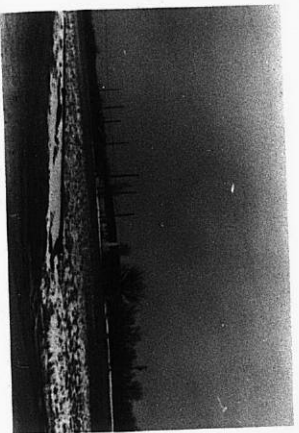
No. 7-0433 AA TO LC BB  
 Desc. E SIDE OF OLIVER IN AN AREA S OF 21ST STREET  
 BY: KENNETH E. KIMBELL  
 D.O.A. BODY ACTION  
 MAPC 2-7-63 denied  
 MAPC 3-21-63  
~~MAPC~~ 2-26-63 Refer Walker plotting  
 MAPC 5-2-63 Refer 60 days to allow plotting  
 MAPC 11-7-63 Refer at applicants request  
 MAPC 11-21-63 Approved (over)  
 RESOLUTION No.: 154 PUBLISHED: 12-21-63  
File discarded 2-3-82

GENERALLY LOCATED ON E SIDE OF OLIVER & S OF 21ST ST.

L-0433

STE

STE



2-0433

17E

17E