

No. 7-0442 B TO LC

DESC. NW CORNER OF MT. VERNON & SPRUCE

BY: I. D. & REBA M. BARBER

D.O.A.	BODY	ACTION
<u>MAR 2-21-63</u>	<u>Long</u>	<u>"LC approve "BB"</u>
<u>3-12-63</u>	<u>BCI</u>	<u>Refer to 4-2-63</u>
<u>4-2-63</u>	<u>Rec.</u>	<u>Approve for "BB"</u>
		<u>file discarded 3-3-82</u>

RESOLUTION No.: 132 PUBLISHED: 4-18-63
7-6-63
pub. in cur

GENERALLY LOCATED AT THE NORTHWEST CORNER OF
 MT. VERNON AND SPRUCE

I-0442

319

319



1



2



3



4

2-0442



5



6



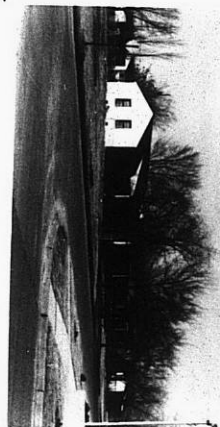
7

X7E

XTE

XTE

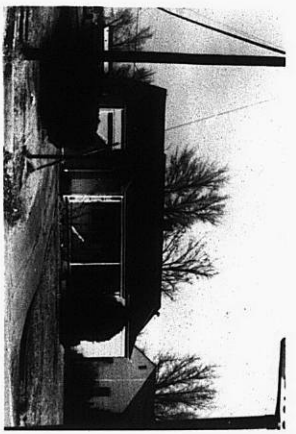
XTE



5



6



7

2-0442