

No. Z-0465 LC to B

Desc. NE corner of 29th St. North & Meridian
(as extended)

By: MAPC

D.O.A.	BODY	ACTION
<u>5-16-63</u>	<u>MAPC</u>	<u>Approve</u>
<u>6-4-63</u>	<u>Res</u>	<u>Approve</u>

File discarded 2-3-82

RESOLUTION No.: 139 PUBLISHED: 6-18-63
140

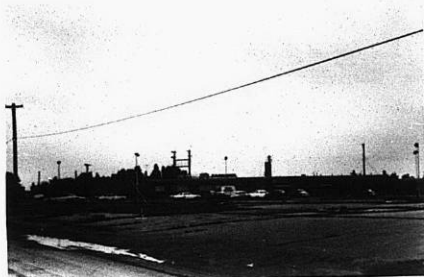
Z-0465

311

311



1



2



3



4



5



6

2-0465

311

34x