

No. Z-0467 B to LC

Desc. SE corner of Deavola & E. Kellogg

By: Dale & Betty Frey

D.O.A. 6-30-63 BODY MAPC ACTION App. Lots 1 & 2 and N 200' of the

6-6-63 balance of application area

2-9-63 See Approve as above

file discarded 2-3-82

RESOLUTION No.: 142 PUBLISHED: 7-19-63

Z-0467

319

319



1



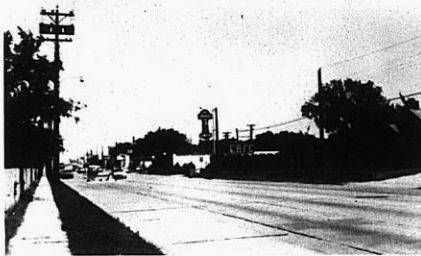
2



3



4



5



6

XTE

XTE



7



8



9

2-0467

311

B4X