

No. Z-0472 A to LC etc

Desc. SW corner of Dellrose and Kellogg

By: A.J. King

D.O.A. BODY ACTION

7-3-63 MAPC Deny

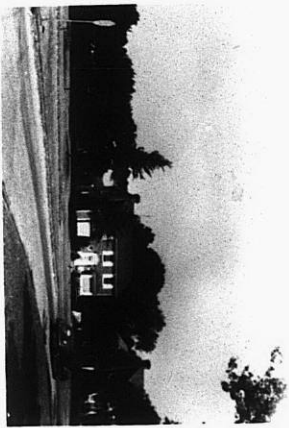
223-63 Deny Deny

File discarded 2-3-82

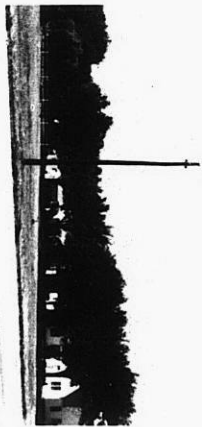
RESOLUTION No.: _____ PUBLISHED: _____

~~Z-0472~~
Z-0472

XFE
XFE

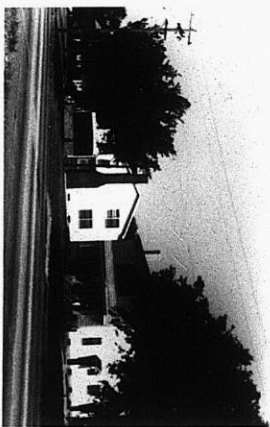


1

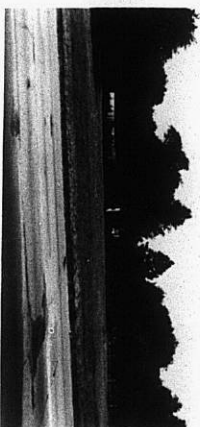


2

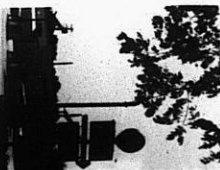
2-0472



3



4



5



6

2-0



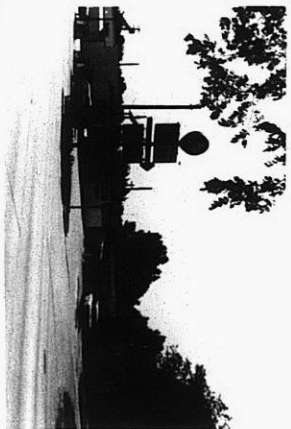
7



8

STE

STE



5

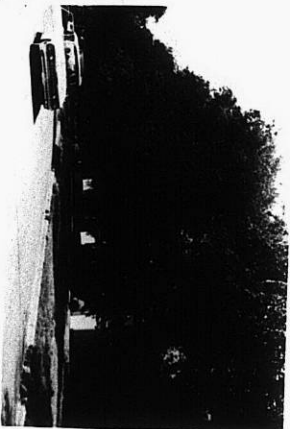


6

2-0472



7



8

319

XFE

XFE