

No. Z-0483

A to LC

Desc. NW corner of Harry & Clifton

By: Catholic Diocese of Wichita \*

D.O.A. BODY ACTION

8-1-63 MAPC Open for 60 days to consider platting

and increasing contributions over

9-19-63 Mape Aggressive - included

10-8-63 Bea returning plat & 15 street

dedication received. (over)

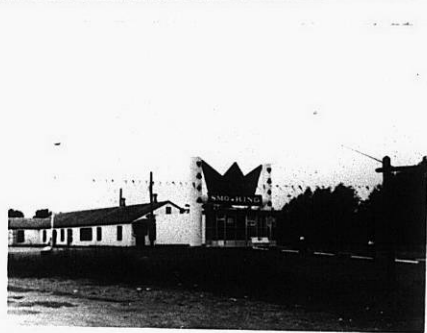
RESOLUTION No.: 187 PUBLISHED: 8-13-64

File discarded 2-3-87

Z-0483

314

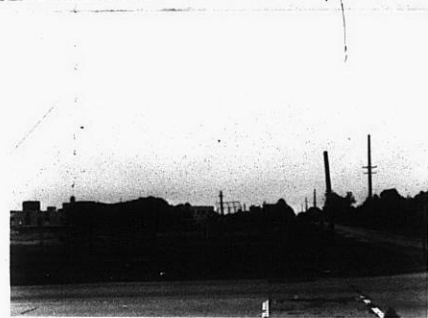
34X



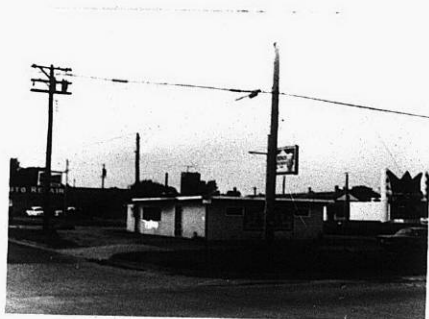
1



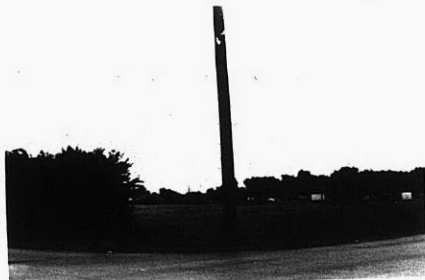
2



3



4



5



6

2-0483

13E

13E