

No. Z-0510

LCV to C

EAR

Desc. S side of 31st St. So. bet. Broadway & Wichita

By: Volney E. Graven et al.

D.O.A. BODY ACTION

12-5-63 MAPC *Approve*

*1224-63 Rec Approve*

*file discarded 2-3-82*

RESOLUTION No.: 156 PUBLISHED: 1-1-64

Z-0510

31A

31X



2-0910

STE

XTE

2-0510



7



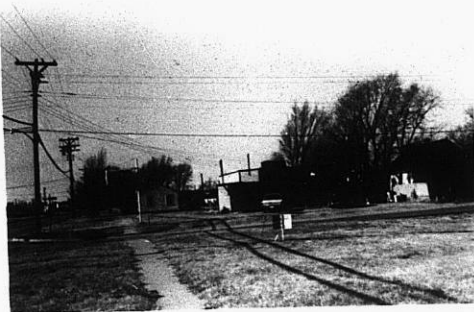
8



9



10



11



12

314

34x