

No. Z-0525

AA to C

Desc. NE corner of Esperence & Kellogg

BY: Celia M. Williams & Ethel B. Dawson

D.O.A. BODY ACTION

3-5-64 MAPC *Approve*

*4-28-67 See Approve*

*file discarded 2-3-82*

RESOLUTION No.: 166 PUBLISHED: 4-25-67

Z-0525

311

311



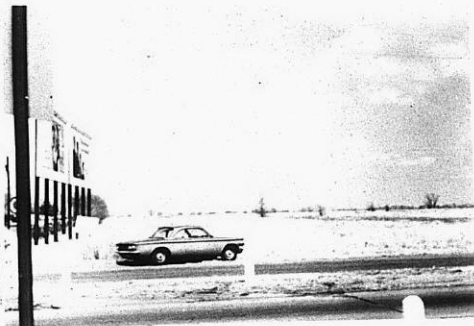
7



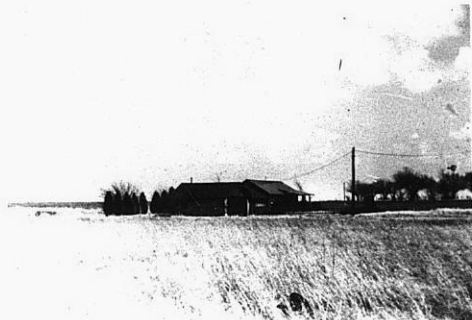
2



3



4



5



6

Z-0525

STE

STE