

No. Z-0531 B to LC <sup>G-8</sup>  
~~576~~

Desc. W side of Bleckley bet. Lincoln & Harvy

---

By: Builders, Inc. et al

D.O.A.            BODY            ACTION

5-7-64                       Refer 60 Maps

3-19-64            MAPC            (of individual)

3-6-65            Maps            Approved subject to replating

---

Closed - 7-22-69

at app. request

---

RESOLUTION No.: \_\_\_\_\_ PUBLISHED: \_\_\_\_\_

file discarded 2-3-82

Z-0531

314  
314



1.



2.



3.



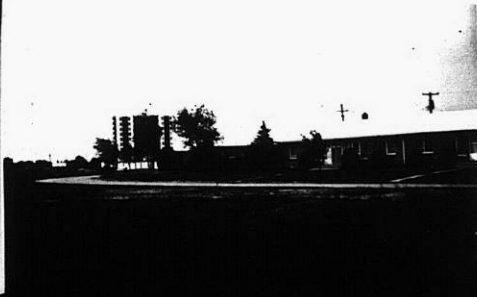
4.

2-0531

5.



6.



319

348

2-0531

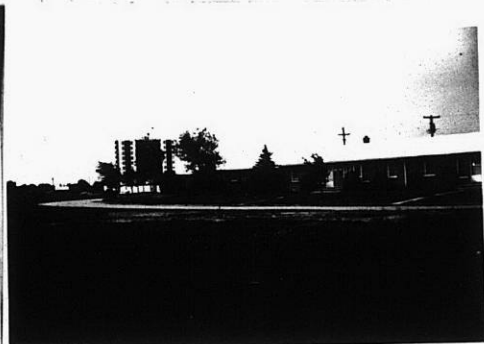
4.



5.



6.



7.

8.

9.

2-0531



10.

11.

319

34X