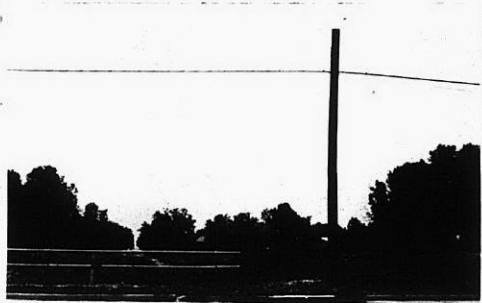


NO. Z-0561 RB to LC  
Desc South of Kellogg between Pinecrest & Beverley  
BY Curtis Dunn  
DOA BODY ACTION NOTICES  
7-2-64 MAPC Approve subj to platting  
3-21-69 Closed by applicants request  
File discarded 2-3-82  
RESOLUTION NO. \_\_\_\_\_ PUBLISHED \_\_\_\_\_

Z-0561

43E

43E



1



2



3



4



5



6

2-0561

319

34X