

NO. Z-0587 "B" & "BB" to "LC"  
DESC NW corner of Mt. Vernon and Spruce  
BY Wichita Properties, Inc. by Robert H. Nelson  
DOA BODY ACTION NOTICES  
9-17-64 MAPC deny  
10-6-64 Sec denied  
closed 10-6-64  
file discarded 2-3-82  
RESOLUTION NO. \_\_\_\_\_ PUBLISHED \_\_\_\_\_  
T21-201

Z-0582

319

341

20582



1.



2.



3.



4.



315

315



3.



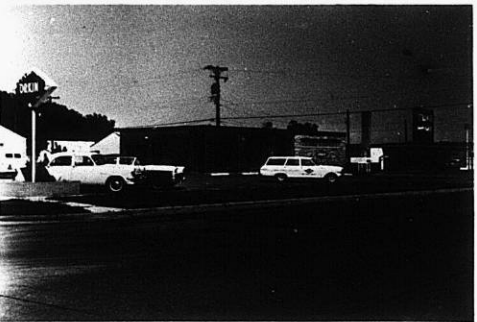
4.



5.



6.



7.



8.

2-0582

XTE

XTE