

NO. Z-0605 A to C

Desc S side of Kellogg between Waverly and Courtleigh Drive

BY Universal Service Stations, Inc. = et al.

DOA	BODY	ACTION	NOTICES
<u>12-E-64</u>	<u>MAPC</u>	<u>App for 'L.C. line S 210'</u>	
<u>4-27-65</u>	<u>Rec</u>	<u>Refer 1-met</u>	
<u>5-4-65</u>	<u>Rec</u>	<u>Approved 'C' ex. S 210'- Series '85'</u>	
<u>Closed 5-5-65</u>			
<u>file discarded 2-3-82</u>			

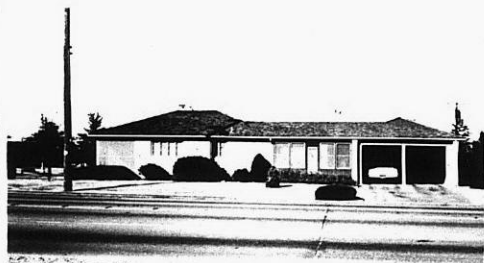
RESOLUTION NO. 835 PUBLISHED 5-8-65

T21-201

Z-0605

319

319



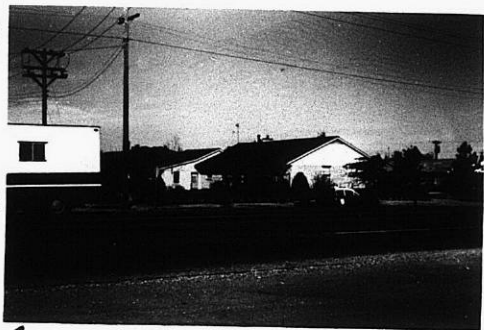
1.



2.



3.



4.



5.



6.

2-0605



3E

3E

4.

5.

6.

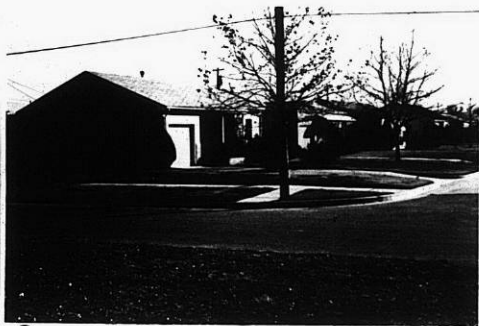
2-0605



7.



8.



9.



10.



11.



12.

2-0605

131

131