

No. 2-0614 "AA" to "B"

Desc. SE corner of Central and Stratford Drive

By: Ellen Hoover, et al.

D.O.A. BODY ACTION

~~2-21-65~~ 2-4-65 MAPC Approved - hold for final

3-23-65 See Approved

Closed 3-23-65

File discarded 2-3-82

RESOLUTION No.: 222 PUBLISHED: 5-27-65

Z-0614

31X

34X



1.



2.



3.



4.



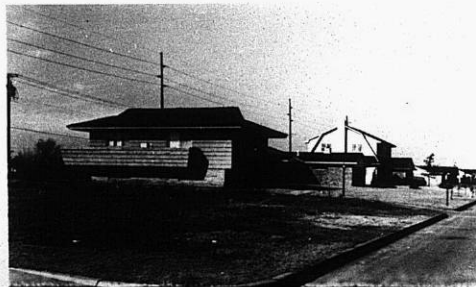
5.



6.

2-0614

2-0614



ATE

XBE

4.

5.

6.

2-0614

2-0614



7.



8.



9.



10.

ATE

ATE