

NO. Z-0627 "AA" to "A"

Desc At the southeast corner of Woodchuck and

Central

BY R. C. Friggeri

DOA BODY ACTION NOTICES

3-4-65 MAPC Approve

3-23-65 Sec Approved

Cloud 3-23-65

File discarded 2-3-82

RESOLUTION NO. 223 PUBLISHED 3-27-65

T21-201

Z-0627

314

34X



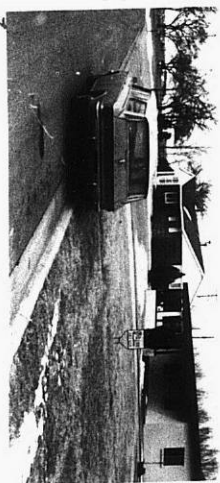
1.



2.



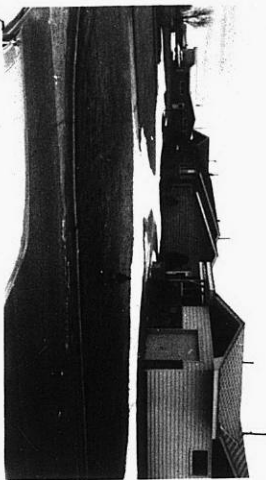
3.



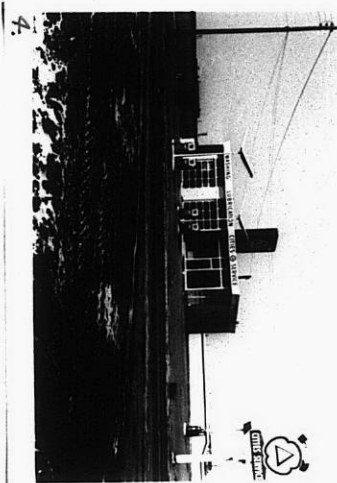
2-0627



9.



5.



7.

319

34X