

NO. Z-0635

AA and LC to AA

Desc On both sides of Mills, just west of Hydraulic
and north of McArthur Road

BY Wm. D. and Marilyn K. Moore, et al.

DOA BODY ACTION NOTICES

4-1-65 MAPC *Readvertise for public*

5-6-65 *Maps* *hearing as amended by PA*

5-25-65 *See* *Approved Lots 1, 2, 3 & 9*
Deny Balance

6-3-65 *Maps*

file discarded 2-3-82

RESOLUTION NO. 245 PUBLISHED 5-29-65
T21-201

Z-0635

314

347



1.



2.



3



4

2-0635

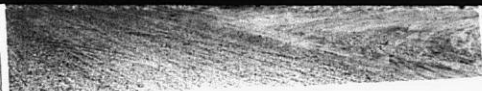


35E

35E



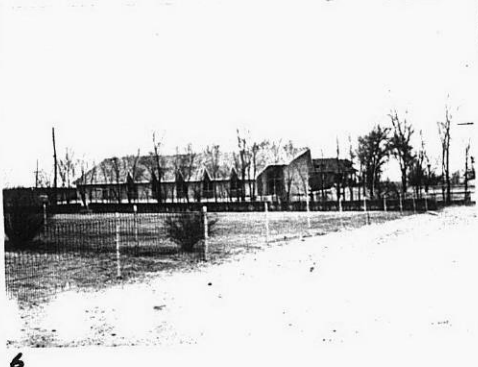
3



4



5



6



7



8



9



10.

2-0635

313

313